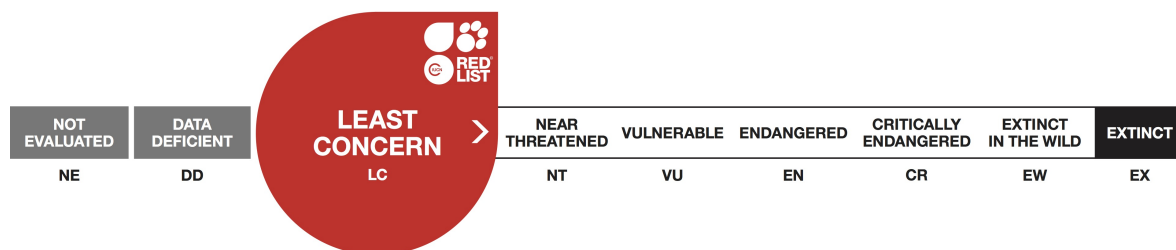


Tamiops swinhoei, Swinhoe's Striped Squirrel

Assessment by: Duckworth, J.W. & Lunde, D.



View on www.iucnredlist.org

Citation: Duckworth, J.W. & Lunde, D. 2008. *Tamiops swinhoei*. *The IUCN Red List of Threatened Species* 2008: e.T21382A9277504.

<http://dx.doi.org/10.2305/IUCN.UK.2008.RLTS.T21382A9277504.en>

Copyright: © 2015 International Union for Conservation of Nature and Natural Resources

Reproduction of this publication for educational or other non-commercial purposes is authorized without prior written permission from the copyright holder provided the source is fully acknowledged.

Reproduction of this publication for resale, reposting or other commercial purposes is prohibited without prior written permission from the copyright holder. For further details see [Terms of Use](#).

The IUCN Red List of Threatened Species™ is produced and managed by the [IUCN Global Species Programme](#), the [IUCN Species Survival Commission \(SSC\)](#) and [The IUCN Red List Partnership](#). The IUCN Red List Partners are: [BirdLife International](#); [Botanic Gardens Conservation International](#); [Conservation International](#); [Microsoft](#); [NatureServe](#); [Royal Botanic Gardens, Kew](#); [Sapienza University of Rome](#); [Texas A&M University](#); [Wildscreen](#); and [Zoological Society of London](#).

If you see any errors or have any questions or suggestions on what is shown in this document, please provide us with [feedback](#) so that we can correct or extend the information provided.

Taxonomy

Kingdom	Phylum	Class	Order	Family
Animalia	Chordata	Mammalia	Rodentia	Sciuridae

Taxon Name: *Tamiops swinhoei* (Milne-Edwards, 1874)

Common Name(s):

- English: Swinhoe's Striped Squirrel

Taxonomic Notes:

The genus *Tamiops* requires taxonomic review. The form *maritimus* has been included in *Tamiops swinhoei* by many authors (Smith and Xie 2008).

Assessment Information

Red List Category & Criteria: Least Concern [ver 3.1](#)

Year Published: 2008

Date Assessed: June 30, 2008

Justification:

This species is assessed as Least Concern, because it is widespread, very abundant in suitable habitat and there are no major threats.

Previously Published Red List Assessments

1996 – Lower Risk/least concern (LR/lc)

Geographic Range

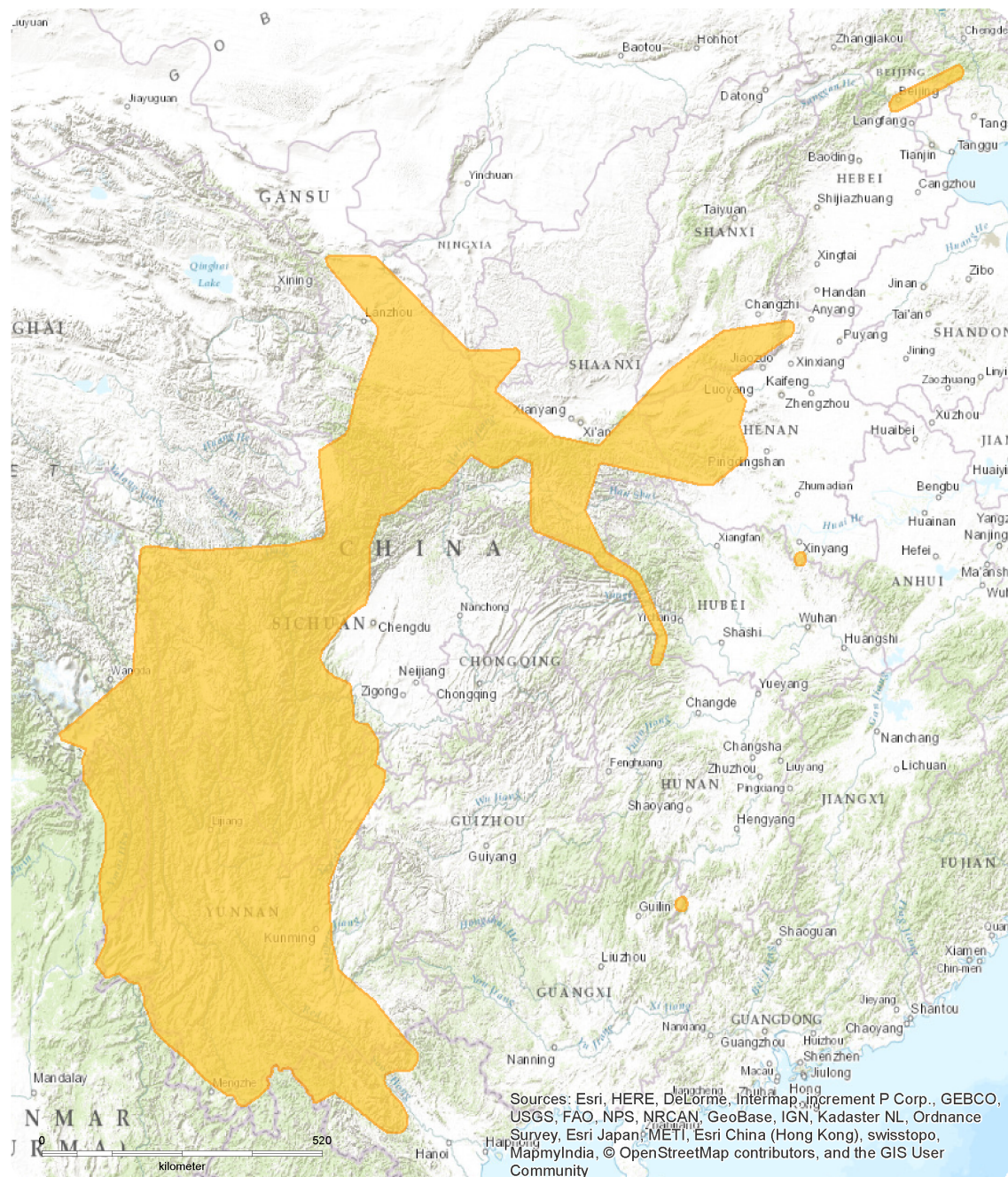
Range Description:

This species has a wide distribution, occurring in central China southwards to northern Myanmar, and northern Viet Nam (Smith and Xie 2008). It may occur in Lao PDR, but no records have been confirmed (Duckworth and Lunde 2004). Its range does not significantly overlap the range of *T. mccllellandi*, but where it does there is altitudinal differentiation (*T. swinhoei*: 2,500-3,000 m asl and *T. mccllellandi*: 300-600 m asl) (Smith and Xie 2008). This species occupies elevations ranging from 1,000 (Duckworth and Lunde 2004) up to 3,900 m asl (Li *et al.* 2006).

Country Occurrence:

Native: China (Beijing, Gansu, Hebei, Henan, Hubei, Hunan, Ningxia, Shaanxi, Shanxi, Sichuan, Tibet [or Xizang], Yunnan); Myanmar; Viet Nam

Distribution Map

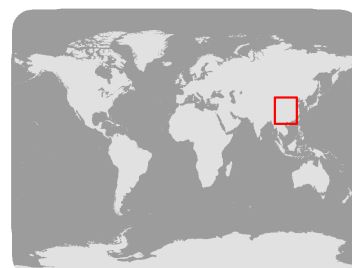


Tamiops swinhoei

Range

Extant (resident)

Compiled by:
IUCN (International Union for
Conservation of Nature)



The boundaries and names shown and the designations used on this map do not imply any official endorsement, acceptance or opinion by IUCN.



Population

This species is common in suitable habitat.

Current Population Trend: Stable

Habitat and Ecology (see Appendix for additional information)

It is found in nearly any habitat with trees, including secondary growth forest, scrub forest, and gardens. It is an arboreal species that occupies holes in trees (Smith and Xie 2008). It is primarily crepuscular in nature (Smith and Xie 2008).

Systems: Terrestrial

Threats

There are no major threats to this species.

Conservation Actions (see Appendix for additional information)

This species occurs in Jiuyuanmihou, Jigongshan (Xinyang), Neixiangbaotianman, Shennongjia, Shimenhupingshan, Suoxiyu, Taibaishan, Foping, Wanglang, Wolong, Ailaoshan, Changshanerhai, Jinpingfenshuiling (Yunnan), Nujiang, Gaoligongshan (Yunnan), Tongbiguan, Wawushan, Zhujiashan, Nanjingnanyaredaiyulin (CSIS 2008), and Jiuzhaigou National Nature Reserves (Liu *et al.* 2005) and may be present in additional protected areas. In China, it has been regionally Red Listed as Least Concern (Wang and Xie 2004).

Credits

Assessor(s): Duckworth, J.W. & Lunde, D.

Reviewer(s): Smith, A.T. & Johnston, C.H. (Global Mammal Assessment Team)

Bibliography

China Species Information Service. 2008. *Tamiops swinhoei*. Available at:

<http://www.chinabiodiversity.com>; <http://www.baohu.org>. (Accessed: June 19).

Duckworth, W. and Lunde, D. 2004. *Tamiops swinhoei*. Available at: <http://www.ieaitaly.org/samd/>. (Accessed: April 17).

Li, S., Feng, Q., Yang, J.-X. and Wang, Y.-X. 2006. Differentiation of Subspecies of Asiatic Striped Squirrels (*Tamiops swinhoei*) (Milne-Edwards) (Rodentia: Sciuridae) in China with Description of a New Subspecies. *Zoological Studies* 45(2): 180-189.

Liu, S., Sun, Z., Ran, J., Liu, Y., Fu, J., Cai, Y. and Lei, K. 2005. Mammalian survey of Jiuzhaigou National Nature Reserve, Sichuan Province. *Acta Theriologica Sinica* 25(3): 273-281.

Moore, J. C. and Tate, G. H. H. 1965. A study of the diurnal squirrels, Sciurinae, of the Indian and Indo-Chinese subregions. *Fieldiana Zoologica* 48: 1-351.

Smith, A.T. and Xie, Y. (eds). 2008. *A Guide to the Mammals of China*. Princeton University Press, Princeton, New Jersey.

Citation

Duckworth, J.W. & Lunde, D. 2008. *Tamiops swinhoei*. *The IUCN Red List of Threatened Species 2008*: e.T21382A9277504. <http://dx.doi.org/10.2305/IUCN.UK.2008.RLTS.T21382A9277504.en>

Disclaimer

To make use of this information, please check the [Terms of Use](#).

External Resources

For [Images and External Links to Additional Information](#), please see the Red List website.

Appendix

Habitats

(<http://www.iucnredlist.org/technical-documents/classification-schemes>)

Habitat	Season	Suitability	Major Importance?
1. Forest -> 1.4. Forest - Temperate	-	Suitable	-
1. Forest -> 1.5. Forest - Subtropical/Tropical Dry	-	Suitable	-
1. Forest -> 1.9. Forest - Subtropical/Tropical Moist Montane	-	Suitable	-
3. Shrubland -> 3.4. Shrubland - Temperate	-	Suitable	-
3. Shrubland -> 3.5. Shrubland - Subtropical/Tropical Dry	-	Suitable	-
14. Artificial/Terrestrial -> 14.3. Artificial/Terrestrial - Plantations	-	Marginal	-
14. Artificial/Terrestrial -> 14.4. Artificial/Terrestrial - Rural Gardens	-	Suitable	-

Conservation Actions in Place

(<http://www.iucnredlist.org/technical-documents/classification-schemes>)

Conservation Actions in Place
In-Place Land/Water Protection and Management
Conservation sites identified: Yes, over entire range

Additional Data Fields

Distribution
Estimated area of occupancy (AOO) (km ²): >2,000
Estimated extent of occurrence (EOO) (km ²): >20,000
Lower elevation limit (m): 1000
Upper elevation limit (m): 3900
Population
Population severely fragmented: No

The IUCN Red List Partnership



The IUCN Red List of Threatened Species™ is produced and managed by the [IUCN Global Species Programme](#), the [IUCN Species Survival Commission](#) (SSC) and [The IUCN Red List Partnership](#). The IUCN Red List Partners are: [BirdLife International](#); [Botanic Gardens Conservation International](#); [Conservation International](#); [Microsoft](#); [NatureServe](#); [Royal Botanic Gardens, Kew](#); [Sapienza University of Rome](#); [Texas A&M University](#); [Wildscreen](#); and [Zoological Society of London](#).